



Understand what's happening on your network

Discover, measure and benchmark how network resources are being utilized by users, applications and servers

Be Proactive

Receive alerts on critical Network Utilization, Application Performance and End-User Experience issues.

Save Money

Understand who and what are consuming your network resources. Identify critical issues and improve operational performance.

Delivering an Enterprise Wide Solution

Link appliances together and manage user access to analytic data across the network infrastructure.

Plan & Predict

Understand current dependencies and network utilizations and have the information necessary to manage change effectively and efficiently.

Network Profiling and Long-Term Application Performance Measurement



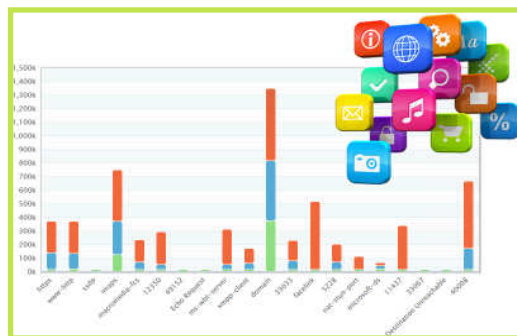
Profiler Plus is sophisticated Network Performance and Networked Application Aware Measurement technology which delivers enterprise-wide NAPM.

Profiler Plus delivers affordable, yet comprehensive Network Performance Monitoring (NPM) and true Network Application Performance Measurement (NAPM).

As a user, there is no application and no network protocol knowledge required to gain invaluable insight into your network traffic profiles, application performance and the associated end-user experience.

DEEP PROTOCOL ANALYSIS

Profiler Plus analysis is much more comprehensive than Deep Packet Inspection (packet signatures).



For example, the Profiler Plus WEB (http) analysis includes:

- ⇒ Who accessed what URL
- ⇒ What objects were downloaded
- ⇒ Associated error codes and media types

For the CIFS protocol the analysis includes:

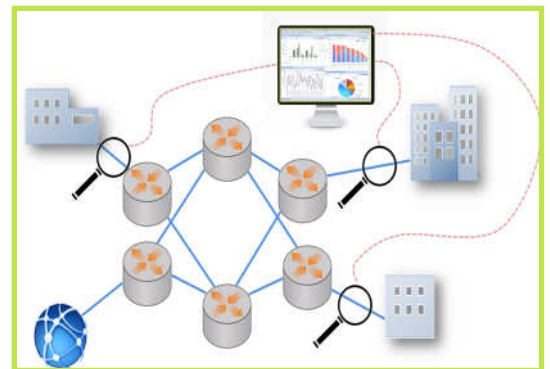
- ⇒ Windows Login Tracking
- ⇒ Shares & Paths
- ⇒ File Transfers and Completion/Error Codes.

Of course, Profiler Plus also provides all the associated application performance information for any TCP transaction



DEPLOYMENT

Profiler Plus is based on passive network appliances or VMWare virtual appliances that are simple and quick to deploy.



Uniquely for Profiler Plus these appliances can be linked together, on a peer-to-peer basis to form a truly enterprise-wide single NAPM solution.

- No agents are required.
- Passive, out of band, with no overhead on the network infrastructure.
- Rapid Installation (less than 15 minutes) connected via mirrored switch port or tap.
- No setup reporting configuration required.

This architecture negates the central management/reporting requirement issues of other vendors and yet Profiler Plus creates almost zero additional traffic overhead on the network.

Even more exceptional is the way Profiler Plus allows an administrator to manage the distribution and access of information across the entire solution. Profiler Plus is designed to deliver a collaborative approach for Network and Networked Application Performance Measurement.

Usability

Highly intuitive and flexible widget-based GUI with user definable dashboards, graphs, tables and data trees.

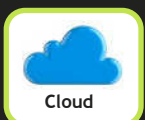
Interoperability

Generate network profiles that can be "played back" on iTrinegy Network Emulators.

Comprehensive Monitoring

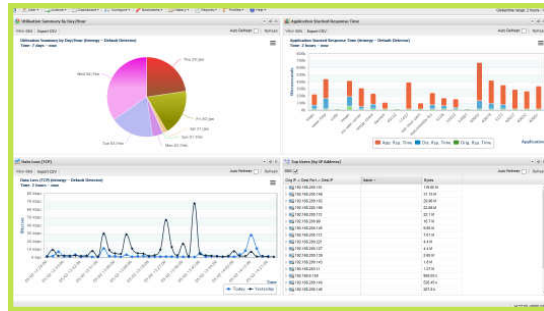
Link appliances, shared dashboards and deliver enterprise-wide collaborative operational intelligence.

Compare analytics, with no loss of granularity, over minutes, hours, days or even months.



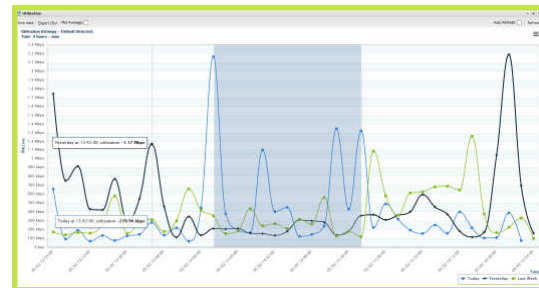
POWERFUL USER INTERFACE

The User Interface is a highly intuitive and elegant web GUI utilizing widget-based graphs, reports and tables displayed within configurable dashboards.



Profiler Plus supports multiple simultaneous users either working independently or collaborating with Shared (Public) Dashboards.

Individual Widgets and Dashboards can display in real-time, relative time (last 2 hours, last 24 hours etc.) or specific time providing unmatched display and reporting flexibility and clarity.



The widget-based analysis really empowers the user with features such as multiple series (plots), time slice selection, click through and hover-over.

DELIVERING VALUE

Profiler Plus delivers enhanced visibility and alerting into your network's applications, hosts, conversations and QoS information:

- Alert on poor Network and Application Performance.
- Diagnose and triage Network and Network Application Performance (end user experience) issues.
- Uncover threatening traffic patterns, rogue or non-production traffic.
- Provide metrics for performance SLAs through delivery of proper empirical performance data.
- Accurately profile network utilization and help with capacity planning.
- Help deliver infrastructure optimization.

DATA MANAGEMENT

Because the Profiler Plus interfaces are all virtualized, it is actually these internal Virtual Interfaces that are logically linked and shared across the architecture.

Therefore, we can uniquely allocate or deny individual Profiler Plus users access to information across the entire solution.

Profiler Plus uses multi-layer (duplicated) data management techniques so that the stored data is already optimized for data retrieval.

Therefore Profiler Plus provides the same high level of granularity whether reviewing a single hour or a whole month of data as historic data is neither summarised or compressed.

PROFILER PLUS MODELS

PROFILER PLUS Model 2
2 x 1Gbps (max 2000 devices) Profiler Ports

PROFILER PLUS Model 4
4 x 1Gbps (max 4000 devices) Profiler Ports

1U Full Depth Hardware Appliance
Or VMWare Virtual Appliance.

USING PROFILER PLUS WITH ITRINEGY NETWORK EMULATORS

iTrinegy Network Emulators can utilize an Emulator scenario file generated by Profiler Plus which is a set of saved Emulator impairment settings. These settings represent the network performance profile of the network that was profiled.

These settings are either static (just one set of parameters for an entire emulation) or dynamic (a set of parameters which vary over time).

SUMMARY

The iTrinegy Profiler Plus delivers a truly enterprise-class yet highly cost-effective NAMP solution.

Profiler Plus delivers both vital day-to-day operational intelligence (not available through protocols like SFlow or Netflow) and long term comparable data analytics.

PROFILER PLUS Where Network Managers and Application Deployment teams need to deliver far more than network node management and link availability.