



Recreating High Speed Fully Meshed Real-World Network Environments



Understand the impact of planned IT changes
Know the effect of deployments or migrations before committing budget and resource

A Full Network-in-a-Box
Replicates Meshed, Star-Coupled, Chained Hop, MPLS and Point-to-Point Networks and any combination of the above.

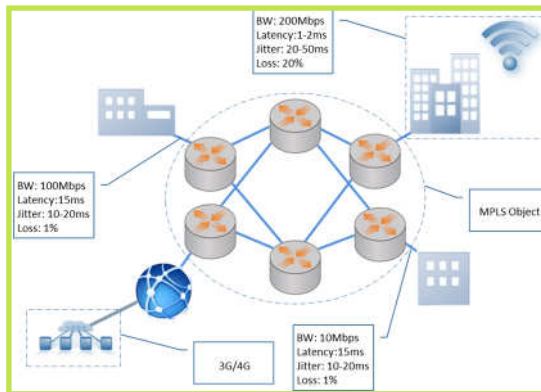
Fully Benchmarked and Validated**
INE Enterprise's performance has been extensively tested and validated using industry leading 3rd party benchmarking technology

New, Powerful VLAN and IP Address based Virtual Port Capability
Turns a single physical port into multiple virtual ports which enable creation of very large networks - without the need to purchase expensive multi-port network emulators

Fully Scriptable
INE Enterprise is scriptable via its own GUI or a command line from Windows, Linux, Mac, FreeBSD etc., or a sockets-based API from any platform

A Rich Array of Impairments***
INE Enterprise can deliver a wide range of different latency, bandwidth, packet loss and bit error impairments, including 1-in-X, Burst, Random, Gaussian and Poisson distribution patterns to enhance the realism of your test network

iTrinegy's INE Enterprise Network Emulator range supports the most demanding requirements of organizations and governments needing to test with a real-world Virtual Network solution that meets all the configuration requirements of the most complex fully meshed networks.



The distributed nature of applications has created a significant burden on the network infrastructures required to meet acceptable performance expectations. Organizations no longer have the option to ignore the criticality of networks within application test and assurance.

INE Enterprise delivers the behavior of any production network within a controlled test environment.

THE COST OF NOT USING A VIRTUAL TEST NETWORK

Managing a critical transformation or deploying applications is all about risk mitigation and cost avoidance. 80% of the costs associated with application deployment occur in remediating failed or underperforming applications.

Sometimes, an even more significant consequence of a poor deployment is the negative impact and consequential costs associated with poor end-user/customer experience and lost of reputation.

THE RIGHT CHOICE

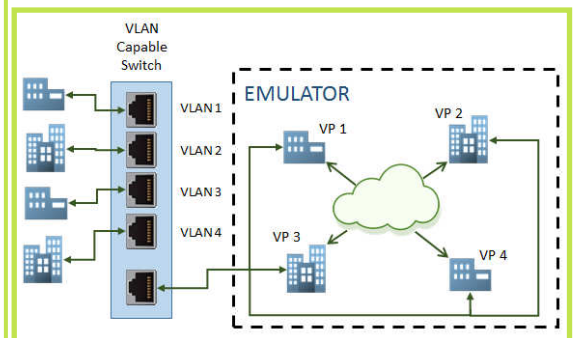
iTrinegy is the recognized leader in network virtualisation and network profiling, supporting some of the most complex and sophisticated network test environments and being trusted by governments and major companies worldwide.

INE Enterprise surpasses the configuration capabilities of any competitive product and is also extremely cost-effective.

UNIQUE DESIGN - FUTURE PROOFED PRODUCT

INE Enterprise is uniquely based on a core programmable packet engine design using Intel® DPDK architecture which eliminates the requirement and cost of special-purpose hardware such as network processors (NPs), application specific integrated circuits (ASICs), and field-programmable gate arrays (FPGAs).

INE Enterprise's Virtual Ports and Virtual Objects are powerful features that mitigate the complexity and cost associated with multiple physical network ports.



iTrinegy is the only Network Virtualization vendor with the technology that can create fully meshed peer to peer and cloud real-world network test scenarios.

Interoperability

INE Enterprise can utilize emulator scenario files generated by iTrinegy Profiler Plus which captures the characteristics of your existing network environments, further helping to enhance the realism of your testing.

Scalable Architecture Future-Proofs Your Investment

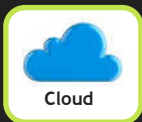
INE Enterprise's underlying architecture is capable of replicating all current and foreseeable networks.

Save Money

Avoid the need for costly post-deployment application re-engineering or fixes.



LAN



Cloud



WANs



Mobile



Wireless



Satellite

POWERFUL USER INTERFACE

INE Enterprise is supplied with an sophisticated, yet easy to use, Network Drawing Interface.

This drag-and-drop multi-platform GUI enables users to configure and control the INE Enterprise through a rich pallet of objects such as buildings, people, computers, routers etc.

The GUI supports a picture overlay facility so that customers can fully visualise emulation topology diagrams and relate them directly with their own environments.

The GUI is self updating: When synchronised with an INE Enterprise the GUI will automatically update its configuration options appropriate to the INE Enterprise unit being managed.

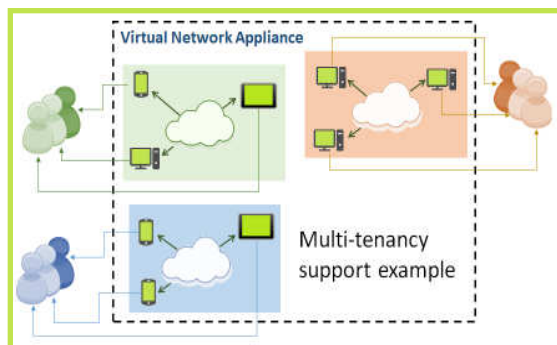
To further maximise the flexibility of use the GUI can also be operated standalone.

INE Enterprise supports both Multi-User and Multi-Emulations:

Multiple users, each with their own GUI can access the INE Enterprise and share configurations and test results. With INE Enterprise you can see what's really happening: Its powerful inbuilt statistics, reports and graphs provide total visibility in terms of the communication traffic, performance and errors.

Multiple simultaneous emulations can be run on the same INE Enterprise. These can either be multiple emulations for a single user or multiple emulations shared amongst multiple users.

A uniquely and compelling feature is the ability to truly scale the test environment as required. The full multi-tenancy capability with all the appropriate user level security and access controls negates the need to "wait in line" until a test facility is free meaning that several different network scenarios can be tested simultaneously.



These features allow close collaboration and further maximise the investment in the technology.

INE ENTERPRISE MODELS

INE Enterprise is supplied in four standard models. However, a higher number of Port Configurations are available on request.

ENTERPRISE Model 2

- 2 x 1Gbps Emulation Ports
- 10 Network Objects (Minimum)*

ENTERPRISE Model 4

- 4 x 1Gbps Emulation Ports
- 20 Network Objects (Minimum)*

ENTERPRISE Model 6

- 6 x 1Gbps Emulation Ports
- 30 Network Objects (Minimum)*

ENTERPRISE Model 8

- 8 x 1Gbps Emulation Ports
- 40 Network Objects (Minimum)*

All Ports are full line rate bi-directional

All models support full aggregated line rates applicable to the port configurations.

**A Network Object is an element of the Emulation Topology that can contain impairments i.e. A Network Link.*

STANDARD PLATFORM

1U Full Depth Hardware Appliance



The performance of INE Enterprise has been independently benchmarked using Spirent TestCenter.

IN SUMMARY



The market required an elegant, accurate and extensible way to anticipate application performance on the network, and that is exactly what INE Enterprise delivers.



It is common knowledge that problems are far less expensive to fix when they're caught early in the application lifecycle, and INE Enterprise represents the defining way to predict how an application will perform in a real world network prior to actual deployment.



Do not trust to hope but rely on INE Enterprise to deliver the insight, proof and confidence that your applications will meet the needs of your business by performing as required.

Invest in an INE Enterprise and be assured of current and future value for money - truly the right choice.