



Understand what's happening on your network

Discover, measure and benchmark how network resources are being utilized by users, applications and servers

Save Money

Understand who and what are consuming your network resources. Identify critical issues and improve operational performance. Have the information necessary to plan transformation and change effectively and efficiently

Mitigate risk in transformation projects

Understand current dependencies and network utilizations and predict the appropriate network requirements for your project

Avoid Rollbacks


Avoid embarrassing "rollbacks", associated loss of productivity and unacceptable end user or customer experience

Comprehensive Monitoring

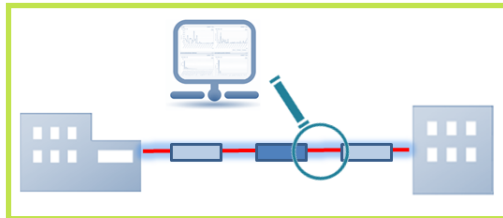
Monitors up to 20,000 sessions per minute*



Network Profiling and Application Performance Measurement in your Virtual Environment

 NE-ONE Flex Profiler is an extensive Network Profiler delivering analysis on network traffic, utilization and application performance in a virtual environment through an elegant widget-based web GUI.

Certified VMware Ready™, NE-ONE Flex Profiler can be spun up anywhere in your organization to measure application performance across all Network arenas including: LAN, WAN, Mobile and Cloud environments.



NE-ONE Flex Profiler delivers affordable, yet comprehensive Network Performance Measurement (NPM) and true Network Application Performance Measurement (NAPM).

NE-ONE Flex Profiler reconstructs sessions, flows, and transactions to deliver extensive analysis of the entire traffic and application flows of the monitored network segments.

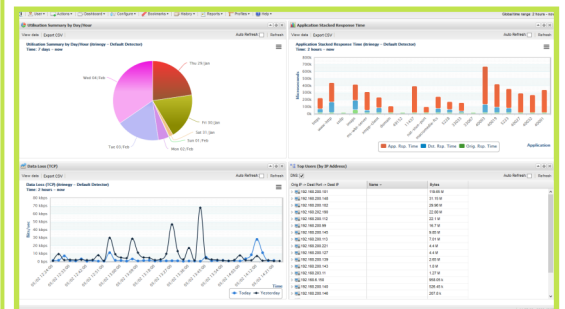
In addition, NE-ONE Flex Profiler can generate Emulation Profiles which can be loaded by the **NE-ONE Flex Virtual Network Emulator** to recreate your network environment for testing and diagnosis. (See Complementary Products)

DEPLOYMENT

- No agents required
- Passive, out of band, with no overhead on the network infrastructure
- Rapid Installation (less than 15 minutes) connected via mirrored switch port or tap
- No setup reporting configuration required

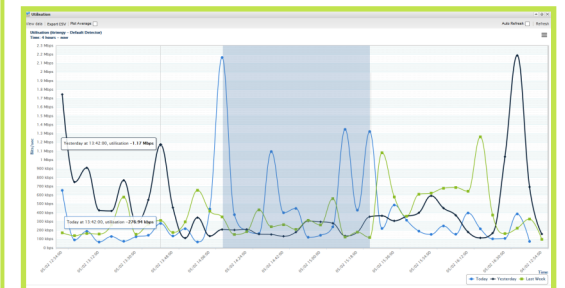
POWERFUL USER INTERFACE

The User interface is a highly intuitive and elegant web GUI utilizing widget based graphs, reports and tables displayed within configurable dashboards.



NE-ONE Flex Profiler supports multiple simultaneous users either working independently or collaborating with Shared (Public) Dashboards.

Individual Widgets and Dashboards can display in real-time, relative time (last 2 hours, last 24 hours etc.) or specific time providing unmatched display and reporting flexibility and clarity.



The widget based analysis really empowers the user with features multiple series (plots), time slice selection, click through and hover-over.

Usability

Highly intuitive and flexible Widget based GUI with user definable dashboards, graphs, tables and data trees.

Interoperability

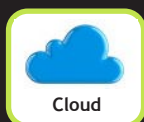
Generate network profiles that can be played back on the NE-ONE Flex Emulator.



LAN



WANs



Cloud



Wireless

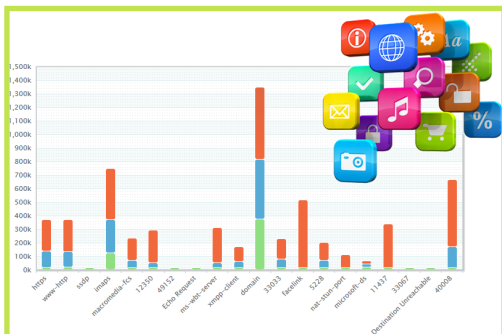


Satellite

APPLICATION PERFORMANCE MEASUREMENT

NE-ONE Flex Profiler is truly an Application-aware Network Performance Measurement (AA-NPM) solution.

AA-NPM is significantly more than analysis of flow records such as NetFlow and sFlow, offering a far higher level of time granularity and performance detail compared with those protocols.



NE-ONE Flex Profiler rebuilds and time stamps every TCP session. This information is used to determine the Originator, Destination and Application (Server) response times associated with the overall application performance or end user experience.

DELIVERING VALUE

NE-ONE Flex Profiler delivers enhanced visibility into your network's applications, hosts, conversations and QoS information.

NE-ONE Flex Profiler can:

- Help you better align resources to support business results
- Mitigate risk in transformation projects and during reconfiguration.
- Diagnose Network Performance and Network Application Performance (end user experience issues).
- Uncovers threatening traffic patterns, rogue or other non-production traffic.
- Provide metrics for performance SLAs through delivery of proper empirical performance data.
- Accurately scope the appropriate network requirements.
- Help determine appropriate network optimization technologies.

NE-ONE FLEX MODELS

With NE-ONE Flex Profiler and two NE-ONE Flex Network Emulator models the NE-ONE Flex solution delivers unsurpassed network test capability and value for money.

The following NE-ONE Flex Profiler model is available:

NE-ONE Flex Profiler:

- 2 x 1Gbps Profiler Ports
- Total 20,000 sessions per minute*

For example, capable of monitoring a network with up to 500 users accessing 50 servers or up to 1000 users accessing 25 servers

SUMMARY

The iTrinegy NE-ONE Flex Profiler delivers both vital day-to-day operational intelligence and invaluable information needed to mitigate risk.



You may also be interested in our NE-ONE Profiler Desktop Appliance which delivers the same comprehensive analysis of network traffic, utilization and application performance on a portable chassis.

COMPLEMENTARY PRODUCTS

Also available as a virtual appliance is the NE-ONE Flex Network Emulator range comprising:

NE-ONE Flex Emulator Model 1:

- 2 x 50Mbps Emulation Ports
- 1 Emulated Network Link

NE-ONE Flex Emulator Model 5:

- 2 x 100Mbps Emulation Ports
- 5 Concurrent Emulated Network Links

All Emulation Ports are Full Line Rate, Bi-Directional

NE-ONE Flex Network Emulator range can use the network characteristics captured by the NE-ONE Flex Profiler to replicate the profiled network scenario and enhance the realism of the test network being created.