

WHAT'S INSIDE

- 1 Overview
- 2 Features & Benefits
- 3 Model Options
- 4 VMware Ready
- 5 More Products
- 6 Free Trial

Rapid Recreation of Real-World Networks in Virtualized Environments



- ✓ Certified VMware Ready™
- ✓ OpenStack KVM Support
- ✓ Virtual Appliance
- ✓ Identical Features to NE-ONE Desktop Appliance
- ✓ Free Trial

OVERVIEW

iTrinegy's NE-ONE Flex Network Emulator range combines the cost and flexibility benefits of virtualization with the ability to recreate a wide range of realistic network conditions delivered by iTrinegy's industry-leading Network Emulation technology.

COMPREHENSIVE FEATURES & BENEFITS

The NE-ONE Flex Virtual Appliance offers the full list of NE-ONE's features for maximum functionality including Geolocation Network Latency Calculator, Predefined Network Link Types & Properties, Network Scenario Builder, Multiple Concurrent Paths, Dual Hop/Last Mile Emulation, more than 50 Network Impairments, Graphs & Statistics, CLI, Multi-user/Multi-tenancy and more. This enables customers to verify application performance, within a virtual-only or hybrid environment, over networks such as LAN, WAN, Internet (cloud), WiFi, (A)DSL, Mobile and Satellite.

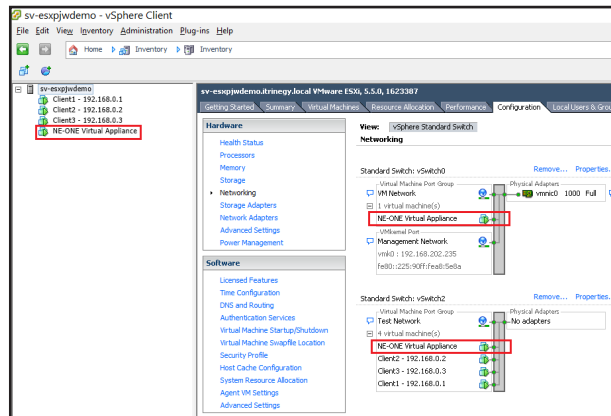
NE-ONE FLEX MODELS

The NE-ONE Flex Emulator is available in a choice of models to suit your needs:

<p>NE-ONE Flex Emulator Model 1:</p> <ul style="list-style-type: none"> • 2 x 50Mbps Emulation Ports • 1 Emulated Network Link <p>NE-ONE Flex Emulator Model 5:</p> <ul style="list-style-type: none"> • 2 x 100 Mbps Emulation Ports • 5 Concurrent Emulated Network Links <p>NE-ONE Flex Emulator Model 10:</p> <ul style="list-style-type: none"> • 2 x 200Mbps Emulation Ports • 10 Concurrent Emulated Network Links • Network Scenario Builder 	<p>NE-ONE Flex Emulator Model 20:</p> <ul style="list-style-type: none"> • 4 x 1Gbps Emulation Ports • 20 Concurrent Emulated Network Links • Network Scenario Builder • CLI <p>NE-ONE Flex Emulator Model X2:</p> <ul style="list-style-type: none"> • 2 x 10Gbps & 2 x 1Gbps Emulation Ports • 20 Concurrent Emulated Network Links • Network Scenario Builder • CLI
---------------------------------------------------------------------------------------------------------------------------------------------------------------------------------------------------------------------------------------------------------------------------------------------------------------------------------------------------------------------------------------------------------------------------------------------------------------------------------------------------------------------------------------	----------------------------------------------------------------------------------------------------------------------------------------------------------------------------------------------------------------------------------------------------------------------------------------------------------------------------------------------------------------------------------------------------------------------------------------------------------------

VMWARE READY

NE-ONE is VMware Ready™ certified so you can be assured that it has been optimized for VMware vSphere and interoperates seamlessly with the virtual infrastructure. It has met VMware's specific integration and interoperability standards. The VMware Ready Logo indicates the unique features and capabilities of VMware-integrated products and solutions and a solid commitment to long-term feature support. Every NE-ONE Virtual Appliance is provided with VMware Tools pre-installed. Furthermore, iTrinegy is an established VMware Partner and the VMware Ready Certification designates VMware's highest level of endorsement for products and solution.



OPENSTACK COMPATIBLE

Offered as OpenStack Compatible, the NE-ONE Network Emulator range has proven compatibility to interact with OpenStack Powered Clouds that utilize the KVM hypervisor.



FREE TRIAL

The NE-ONE free trial provides you with unrestricted access to all of the features and benefits. To start your free trial:

- Request the Installation and Configuration Guide from support@itrinegy.com.
- Download the Virtual Appliance image.
- Request a licence key.
- Start your free trial.

NE-ONE VIRTUAL MACHINE TECHNICAL SPECIFICATIONS

The following are the default and minimum specifications for a typical installation.

- 2 x CPUs
- 8GB RAM
- 16GB Hard Disk (Thin Provisioned)
- 3 x Virtual NICs
 - 1 x Network Management
 - 2 x Network Emulation

NE-ONE VIRTUAL APPLIANCE CAPABILITIES

For a comprehensive breakdown of the NE-ONE Flex Emulator range's full capabilities please read the [NE-ONE Network Emulator Range PDF](#)